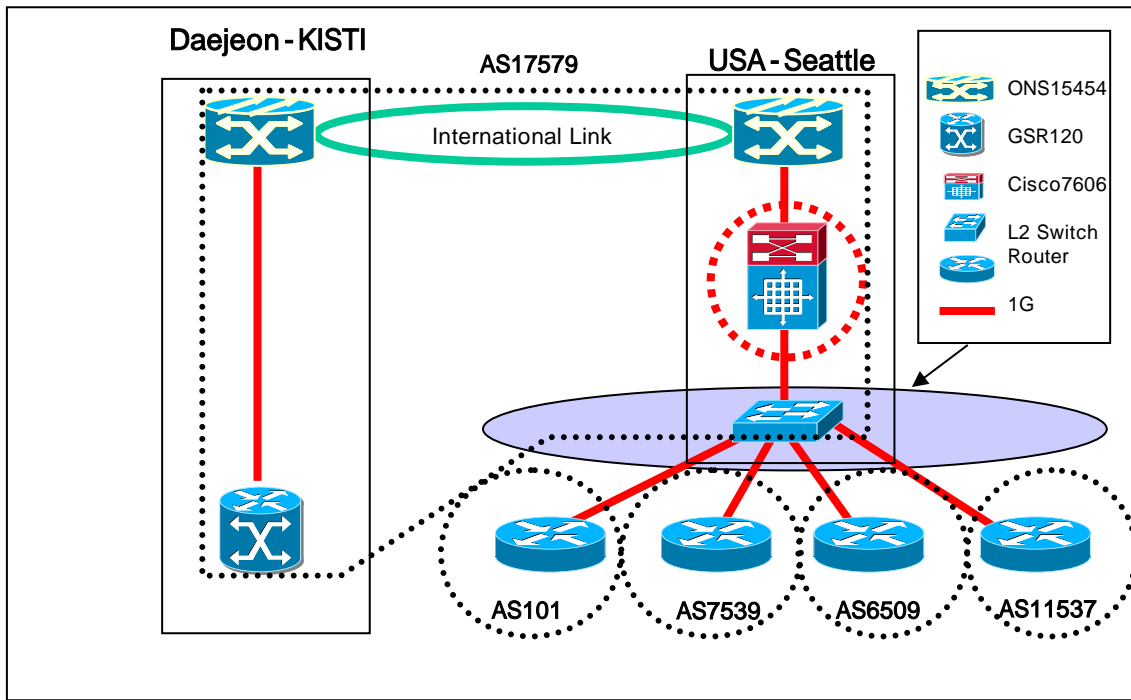


**KR-US APII/KREONet2 Router  
Connectivity Test and Traffic Status**

2005. 01.10

**KREONet2 Network Operations Center  
KISDI APII Cooperation Center**

## 1. KR-US APII Testbed/KREONET2 Monitoring Check



## 2. BGP Connectivity Test (see the BGP peering Status of 134.75.108.162)

```
GSR#1-STARTAP#sh ip bgp sum
```

```
BGP router identifier 210.218.215.249, local AS number 17579
```

```
BGP table version is 1060505, main routing table version 1060505
```

```
13747 network entries using 1553411 bytes of memory
```

```
31105 path entries using 1493040 bytes of memory
```

```
5475/2306 BGP path/bestpath attribute entries using 591300 bytes of memory
```

```
4112 BGP AS-PATH entries using 113300 bytes of memory
```

```
416 BGP community entries using 14472 bytes of memory
```

```
0 BGP route-map cache entries using 0 bytes of memory
```

```
5705 BGP filter-list cache entries using 68460 bytes of memory
```

```
BGP using 3833983 total bytes of memory
```

```
BGP activity 74795/55608 prefixes, 1312667/1271353 paths, scan interval 60 secs
```

Neighbor	V	AS	MsgRcvd	MsgSent	TblVer	InQ	OutQ	Up/Down	State/PfxRcd
134.75.20.1	4	1237	122186	310879	1060504	0	0	1d10h	6065
134.75.20.5	4	1237	2158548	303289	1060504	0	0	3w3d	0
134.75.20.75	4	17579	0	0	0	0	0	never	Active
134.75.20.254	4	1237	92729	299102	1060504	0	0	1w4d	6065
134.75.108.34	4	6509	77641	72631	1060505	0	0	1w3d	710
134.75.108.46	4	11537	312408	72728	1060505	0	0	1w3d	8321
134.75.108.50	4	22335	40556	68961	1060505	0	0	1w3d	569
134.75.108.54	4	1103	35689	37149	1060505	0	0	13:54:22	105
134.75.108.58	4	513	71138	72364	1060505	0	0	1w3d	20
134.75.108.162	4	17579	172937	241657	1060505	0	0	1w3d	2505
198.125.140.13	4	293	76337	232030	1060505	0	0	10:09:41	136
203.255.250.230	4	9270	34608	124950	1060505	0	0	1w1d	445
210.218.215.250	4	1237	108079	303289	1060504	0	0	3w3d	6065
211.79.48.181	4	7539	60845	36926	1060505	0	0	1w3d	96

### 3. Connectivity Test (1,000 times of ping from Daejeon to Seattle)

GSR#1-STARTAP#ping

Protocol [ip]:

Target IP address: 134.75.108.162

Repeat count [5]: 1000

Datagram size [100]:

Timeout in seconds [2]:

Extended commands [n]:

Sweep range of sizes [n]:

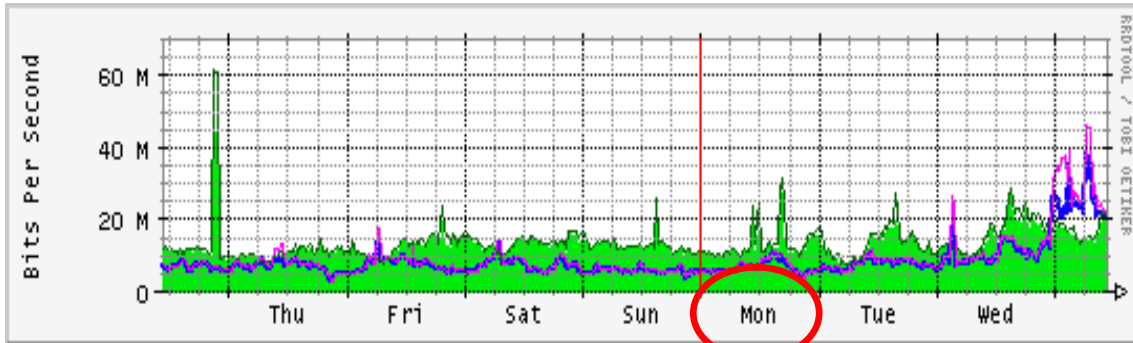
Type escape sequence to abort.

Sending 1000, 100-byte ICMP Echos to 134.75.108.162, timeout is 2 seconds:

```
!!!!!!!!!!!!!!!!!!!!!!!!!!!!!!!!!!!!!!!!!!!!!!!!!!!!!!!!!!!!!!!!!!!!
!!!!!!!!!!!!!!!!!!!!!!!!!!!!!!!!!!!!!!!!!!!!!!!!!!!!!!!!!!!!!!!!!!!!
!!!!!!!!!!!!!!!!!!!!!!!!!!!!!!!!!!!!!!!!!!!!!!!!!!!!!!!!!!!!!!!!!!!!
!!!!!!!!!!!!!!!!!!!!!!!!!!!!
```

Success rate is 100 percent (1000/1000), round-trip min/avg/max = 212/219/432 ms

#### 4. Weekly Traffic Status between KR (Daejeon) to US (Seattle)



January 10    January 11    January 12